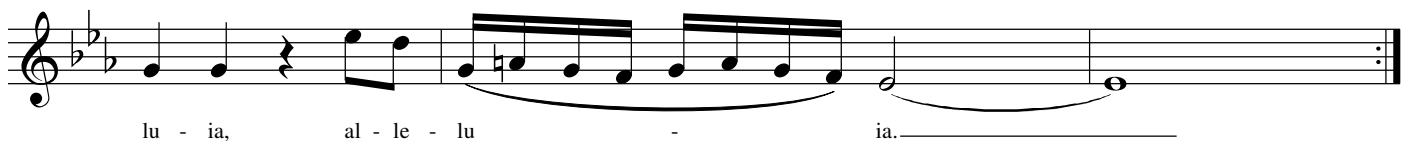
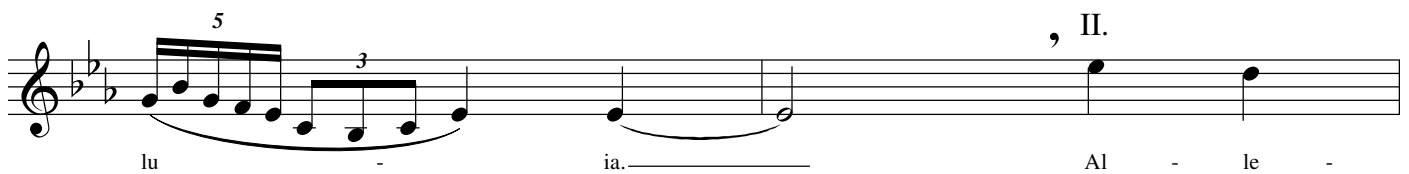
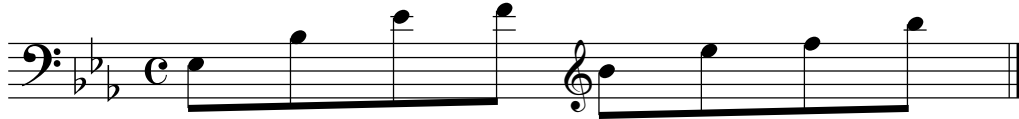


Overtonal Alleluia

D. V. Montoya

Tones Chimes, Handbells, and/or Piano:



Intro: All bells play together for three whole notes.

Part 1: All singers sing I and then II in unison. All bells ring together on every "lu" syllable.

Part 2: Men begin two-part round and sing I-II-I. Women sing I-II. Bells continue ringing every "lu."

Part 3: All voices sing all or any part of the melody in random order and in random rhythm. Bells also ring randomly. If using as a processional, the random singing may continue for quite a while, until all singers are in place.

Ending: Fade out over a period of at least 30 seconds to 1 minute. Then cue all bells for one last whole note as the choir cuts off. Let the bells fade naturally.

Notes: 1. The piano may be used if no bells are available. It can also be used to double the bells. In either case, extend the notes Eb, Bb, F in both direction, making sure that Eb, Bb, Eb is the bass drone. It would be appropriate for the piano to improvise during Part 3, but avoid playing the third (G) and any notes that are not in the melody.

2. If using this as a processional, have the students stand in various places in the hall or church for Verse I and II, and then process on Verse 3. They should be in place by the fade out.

- D. V. M.